

# Router Set-up Guide

FttC Connections



Congratulations! You've just signed up to a Bendigo Telco nbn™ service. Before you're able to get online, there's a few things that are worth checking first

## YOUR ROUTER AND EQUIPMENT ARRIVED SAFELY

Make sure that your pre-configured router and equipment all arrived in one piece. In your pack you should have received the following items:



Netcomm Wireless Gateway Router



Power Supply (12V/2A)



Ethernet Cable



Telephone Cable



WiFi Security Card

## MAKE SURE YOU'RE USING THE RIGHT EQUIPMENT

It's important that you only use the equipment provided when connecting your nbn service.

## YOUR NBN CONNECTION BOX HAS BEEN INSTALLED

If you opted for self-installation, you will receive your connection box directly from *nbnCo* and will need to install it using the instructions provided in the pack.

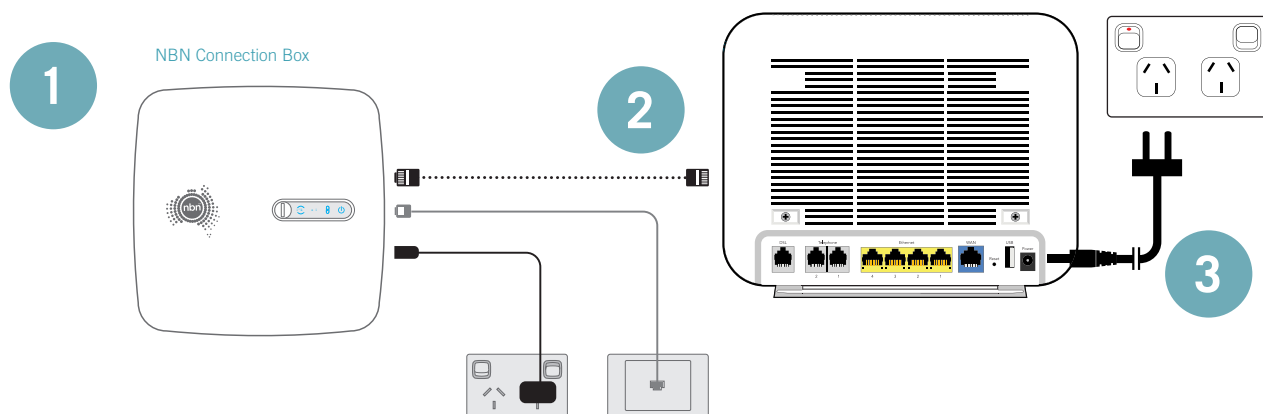
If you opted for professional installation, an *nbnCo* representative will attend site on your designated appointment day to install the connection box for you.

You'll know your nbn Connection Box has been connected correctly once the Connection Light & Broadband Light on top of the device turn a solid blue.

## You're ready to connect!

Follow the set up guide instructions over the page to get your service up and running.

## Connecting your router to the NBN



### STEP 1

Once your nbn Connection Box has been connected inside your premises, take your Netcomm router over to the Connection Box.

### STEP 2

Take the Ethernet cable provided and plug one end into the “WAN” port on your router and the other end into the “Gateway” port on your nbn Connection Box.

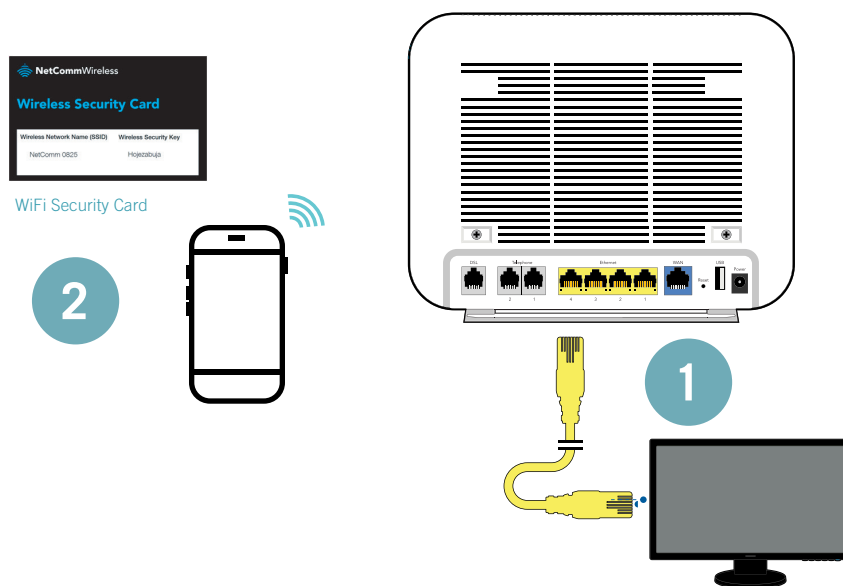
### STEP 3

Plug one end of the power adapter into your router and the other end into the powerpoint - switch both on.

## YOUR ROUTER SHOULD NOW BE CONNECTED!

*Note - all lights on the router will continually flash until the router synchronizes with your connection. This can take around 15 minutes but will not interrupt you continuing with the setup process.*

## Connecting your devices to the router



### 1. DIRECT CONNECTION / ETHERNET

Connecting directly with a cable - use the yellow Ethernet cable provided in your box. Plug one end into an Ethernet port on your router and the other end into the device you're wanting to connect.

### 2. WIFI

Connecting via WIFI - enter the WIFI details into each device you wish to connect. You can find the WIFI username & password on the WIFI card provided in the box.

**YOUR DEVICES SHOULD NOW BE CONNECTED!**